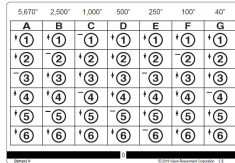


DOCTOR INSTRUCTIONS

Thank you for purchasing the Vision Assessment Corporation Volume Stereo Acuity Test Polarized Fixed Vectograph. (P/N 1021).



PURPOSE

A three-dimensional grid is used as a quick and quantitative test for assessing a patient's Stereo Volume capacity.

FAMILIARIZE YOURSELF WITH THE VECTOGRAPH

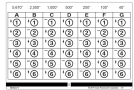
- Polarized Fixed Vectograph consists of:

- 1 Guide (To prevent curling)



- 1 Vectographic Panel

Panel 1



- 1 Pair Standard Polarized Viewers



(NOT TO BE USED AS SUNGLASSES)

- Instruction Manual

TESTING CONDITIONS

- Well-lit, glare-free area
- If reflections or glare on the Vectograph can be seen, try tilting it or choose another testing location.

ADMINISTRATION

- Place the polarized viewers on the patient.
PLEASE NOTE: DOCTOR SHOULD ADVISE WHETHER OR NOT POLARIZED VIEWERS SHOULD BE WORN OVER PATIENT'S PRESCRIPTION GLASSES.
- Hold the Vectograph approximately 16 inches (40 cm) in front of the patient.
- The numbered circles present stereopsis values, measured in seconds of arc (sec), which are either Base-out (+) or Base-In (-) with increasing depth in the columns reading from left to right. The circles will float either up (out), even (flat) or below (in) the film plane.
- First have the patient read row (1) and indicate the direction of float for each circle. All the circles float up, but this will help to accustom the

patient to the increasing levels of stereopsis. If read left to right the depth increases from column A at 38 sec stair stepped up to column G at 1,875 sec. Read in reverse G-A the depth would be in decreasing steps.

- If the patient is unable to perceive any changes in depth, the patient is untestable.
- To assess the patient's stereopsis threshold, start with column D, and have the patient indicate the direction of float for each circle in column D. Refer to the Scoring section below for direction of float.
- Next have the patient read column C and indicate the direction of float for each circle in column C. Then have the patient repeat this process for column E, then column B, followed by column F and finishing with columns A and G.
- Once a comfortable level is assessed, have the patient again read down the appropriate column and indicate the direction of float for each circle.
- To use as a training exercise for increasing a patient's Stereo Volume, have the patient progress from the determined start point further to the right columns until the circles' float in each column through column G can be correctly identified.

SCORING

OUT ↑
FLAT —
IN ↓

Arc Seconds
from Grid

	+38"	+75"	+150"	+376"	+750"	+1,500"	+1,875"
	- 25"	- 50"	- 100"	- 250"	- 500"	- 1,000"	- 1,250"
A	B	C	D	E	F	G	
↑ ①	↑ ①	↑ ①	↑ ①	↑ ①	↑ ①	↑ ①	↑ ①
↓ ②	- ②	↑ ②	↑ ②	↓ ②	- ②	↑ ②	↑ ②
- ③	↑ ③	↓ ③	↑ ③	- ③	↑ ③	↓ ③	↓ ③
↑ ④	↓ ④	- ④	↓ ④	↑ ④	↓ ④	- ④	- ④
↓ ⑤	- ⑤	↑ ⑤	- ⑤	↓ ⑤	↑ ⑤	↓ ⑤	↓ ⑤
↑ ⑥	↓ ⑥	↓ ⑥	↑ ⑥	- ⑥	↓ ⑥	↑ ⑥	↑ ⑥

F-8

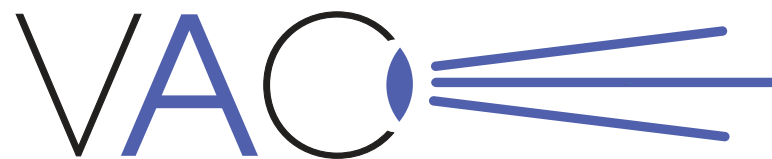
© 2020 Vision Assessment Corporation

CARE/HANDLING & STORAGE

- Clean vectographic panel and guide with a soft, damp, lint-free cloth. Dampen cloth using glass cleaner or mild detergent/water.
- CAUTION: DO NOT IMMERSE THE VECTOGRAPHIC PANEL IN WATER. DO NOT SPRAY CLEANER DIRECTLY ONTO PANEL.
- ☀️☔ Store Vectograph in a dry place away from direct sunlight.
- Clean polarized viewers using lens cleaner and soft, lint-free cloth.

WARRANTY

- 1 year manufacturer warranty from date of purchase.



Vision
Assessment
Corporation™

Volume Stereo Test

Fixed Polarized Vectograph

P/N 1021

DOCTOR INSTRUCTIONS

Vision Assessment Corporation
5400 Newport Drive, Suite 3
Rolling Meadows, Illinois 60008 USA
Phone: 1 847 239 5889
Email: sales@VisionAssessment.com
Web: www.VisionAssessment.com



MDSS GmbH,
Schiffgraben 41, Hannover 30175, Germany

 Manufactured in USA by Vision Assessment Corporation © 2021