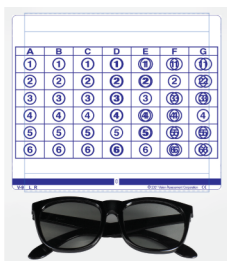


INSTRUCTIONS

Thank you for purchasing the Vision Assessment Corporation Volume Stereo Acuity Test Polarized Variable Vectograph, (P/N 1022).



PURPOSE

An exercise therapy using a three-dimensional grid to increase a patient's Stereo Volume capacity.

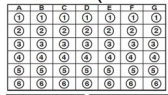
FAMILIARIZE YOURSELF WITH THE VECTOGRAPH

1. 1 Guide

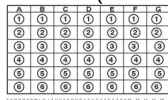


2. 2 Vectographic Panels

- Panel 1 (Blue Bar at Bottom)



- Panel 2 (Numbers/Letters at Bottom)



3. 1 Pair Standard Polarized Viewers



(NOT TO BE USED AS SUNGLASSES)

4. 1 Record Form with Pen

5. Instruction Manual

TESTING CONDITIONS

- Well-lit, glare-free area
- If reflections or glare on the Card can be seen, try tilting it or choose another testing location.

ADMINISTRATION

1. Place the polarized viewers on the patient.
PLEASE NOTE: DOCTOR SHOULD ADVISE WHETHER OR NOT POLARIZED VIEWERS SHOULD BE WORN OVER PATIENT'S PRESCRIPTION GLASSES.
2. Slide the 2 panels into the guide until the 0 appears in the opening at the bottom of the test. Ensure the numbers panel is behind the blue bar panel.
3. Hold the Vectograph approximately 16 inches (40 cm) in front of the patient.
4. The numbered circles present stereopsis values, measured in seconds of arc (sec), which are either Base-out (+) or Base-In (-) with increasing depth in the columns reading from left to right. The circles will float either up (out), even (flat) or below (in) the film plane.
5. First have the patient read row (1) and indicate the direction of float for each circle. All the circles float up, but this will help to accustom the patient to the increasing levels of stereopsis. If read left to right the depth increases from column A at 38 sec stair stepped up to column G at 1,875 sec. Read in reverse G-A the depth would be in decreasing steps.
6. If the patient is unable to perceive any changes in depth, the patient is untestable.
7. To assess the patient's stereopsis threshold, start with column D, and have the patient indicate the direction of float for each circle in column D. Refer to the "Answer Key" on the back of this manual for the direction of float.
8. Next have the patient read column C and indicate the direction of float for each circle in column C. Then have the patient repeat this process for column E, then column B, followed by column F and finishing with columns A and G.
9. Once a comfortable level is assessed, have the patient again read down the appropriate column and indicate the direction of float for each circle.
10. Repeat step 8-9 while slowly sliding the panels apart. Ask the patient to continue to try to maintain a single image.
11. Have the patient notify you when he/she is no longer able to fuse the two images. (This is the Breaking Point).
12. Note the number/letter in the space on the blue bar at the bottom of the Vectograph. Refer to "Scoring" section on the back of this manual.
13. Next, as you slowly slide the panels back together, ask the patient to notify you when he/she is able to see the two numbered panels as a single clear image again. (This is the Recovery Point).
14. Note the number/letter in the in the space on the blue bar at the bottom of the Vectograph. Refer to "Scoring" section of this manual.
15. Repeat steps 9 – 14 until patient can achieve the doctor's recommended goal.
16. Follow any variation on these exercises as recommended by the doctor.

SCORING

- Refer to the Patient Vision Therapy Record Form.
- Record the date.

- Above the diagonal line in the row labeled “Relaxing” record the Breaking Point for the highest letter on the blue bar that the patient is able to reach.
- In the same row below the diagonal line record the Recovery Point for the highest letter from the blue bar at which the patient is able to fuse the images as a single clear image again.
- Repeat the previous 2 steps for the row labeled “Crossing” for recording the Breaking Point and Recovery Point for the highest numbers that the patient can reach on the blue bar at the bottom of the Vectograph.

ANSWER KEY

OUT ↑
 FLAT — Arc Seconds
 IN ↓ from Grid

	+38"	+75"	+150"	+376"	+750"	+1,500"	+1,875"
	-25"	-50"	-100"	-250"	-500"	-1,000"	-1,250"
	A	B	C	D	E	F	G
↑	①	①	①	①	①	①	①
↓	②	②	②	②	②	②	②
-	③	③	③	③	③	③	③
↑	④	④	④	④	④	④	④
↓	⑤	⑤	⑤	⑤	⑤	⑤	⑤
↑	⑥	⑥	⑥	⑥	⑥	⑥	⑥

F-8 © 2020 Vision Assessment Corporation CE

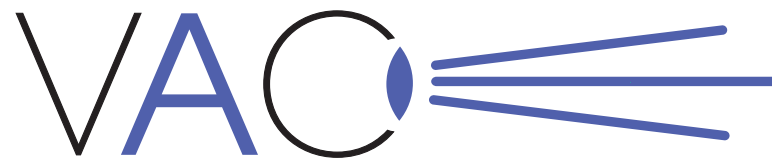
CARE/HANDLING & STORAGE

- Clean vectographic Panels and Guide with a soft, damp, lint-free cloth.
- Dampen cloth using glass cleaner or mild detergent/water.
- **CAUTION: DO NOT IMMERSE THE VECTOGRAPH IN WATER.**
- **DO NOT SPRAY CLEANER DIRECTLY ONTO VECTOGRAPH.**
- ☀️☔ Store Vectograph in a dry place away from direct sunlight.
- Clean polarized viewers using lens cleaner and soft, lint-free cloth.

WARRANTY

- 1 year manufacturer warranty from date of purchase.

Notice to User/Patient: Any serious incident that has occurred in relation to this device should be reported to the manufacturer and to the competent authority of the Member State in which the user and/or patient is established.



Vision
Assessment
 Corporation™

Volume Stereo Test

Polarized Variable Vectograph

P/N 1022
 DOCTOR INSTRUCTIONS

Vision Assessment Corporation
 5400 Newport Drive, Suite 3
 Rolling Meadows, Illinois 60008 USA
 Phone: 1 847 239 5889
 Email: sales@VisionAssessment.com
 Web: www.VisionAssessment.com

CE EC REP MDSS GmbH,
 Schiffgraben 41, Hannover 30175, Germany

Manufactured in USA by Vision Assessment Corporation © 2021